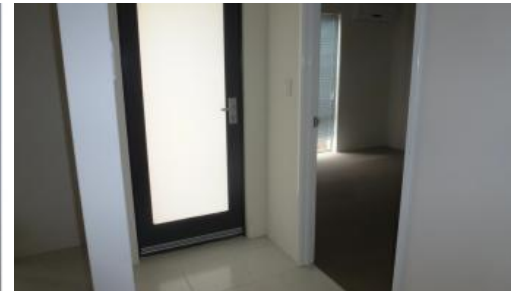


Leased



150 LUKIN Drive, Ridgewood



NRAS \*\*\*VIEWING: WEDNESDAY 5th DECEMBER AT...

Brand new 3x2

Newly built 3x2 home in "Brighton Junction", a well sought after (soon to be complete) complex estate (with pool) situated in Ridgewood, just 40 mins from Perth City & only 2.5kms from the beach.

Three spacious bedrooms all with built in robes, two reverse cycle air conditioning units (one in the master bedroom & one to the main living area), large open plan living, gas bayonet, large chefs kitchen with plenty of cupboard space & alarm system. Double remote garage, easy care reticulation gardens. Sorry no pets.

NRAS-

NRAS SCHEME- This is a government backed scheme aimed at low to moderate income earners.

To apply for this property you will need to fit into the following income brackets. The brackets vary depending on how many people are moving in and whether or not there are children.

You will be asked to provide along with the application form LAST YEARS TAX RETURN and TWO CURRENT PAYSLEIPS OR CENTRELINK STATEMENTS as proof of your income. You will also have to sign a STATUORY DECLARATION declaring the information you have provided is TRUE AND CORRECT. You can be charged for giving false information if we later discover the information provided to be fraudulent.

Household type Initial income limit \$

One adult 45,496

2 adults 62,899

3 2 2

Price \$300 per week  
Property Type Rental  
Property ID 921

#### Agent Details

Robyn Horsman - 08 9206 1600

#### Office Details

Wanneroo  
945 Wanneroo Rd Wanneroo WA 6065  
Australia  
08 9206 1600



3 adults 80,302

4 adults 97,705

Sole parent with 1 child 62,943

Sole parent with 2 children 78,033

Sole parent with 3 children 93,123

Couple with 1 child 77,989

Couple with 2 children 93,079

Couple with 3 children 108,169

The above information provided has been furnished to us by the vendor/s. We have not verified whether or not that information is accurate and do not have any belief in one way or the other in its accuracy. We do not accept any responsibility to any person for its accuracy and do no more than pass it on. All interested parties should make and rely upon their own inquiries in order to determine whether or not this information is in fact accurate.