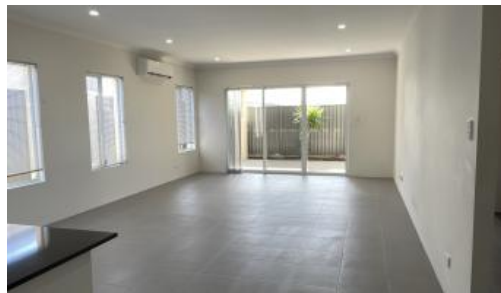




**6 Vitrinella Avenue, Jindalee**



## 4 x 2 with Theatre Room

Property Includes:

- Four generous sized bedrooms with his and hers walk in robe to the main and built in robes to the minor bedrooms.
- Theatre Room
- Two Split system air conditioning units (main bedroom and living area)
- Double lock up garage with shoppers entrance and alarm.
- Kitchen with stainless steel appliances.
- Large open plan living area which is a stones throw to the large play area.

Please call Robyn on 9206 1600 or email [Robyn@urbanwa.com.au](mailto:Robyn@urbanwa.com.au)

The above information provided has been furnished to us by the vendor/s. We have not verified whether or not that information is accurate and do not have any belief in one way or the other in its accuracy. We do not accept any responsibility to any person for its accuracy and do no more than pass it on. All interested parties should make and rely upon their own inquiries in order to determine whether or not this information is in fact accurate.

4 2 2

<b>Price</b>	\$580 per week
<b>Property Type</b>	Rental
<b>Property ID</b>	4318

### Agent Details

Robyn Horsman - 08 9206 1600

### Office Details

Wanneroo  
945 Wanneroo Rd Wanneroo WA 6065  
Australia  
08 9206 1600

