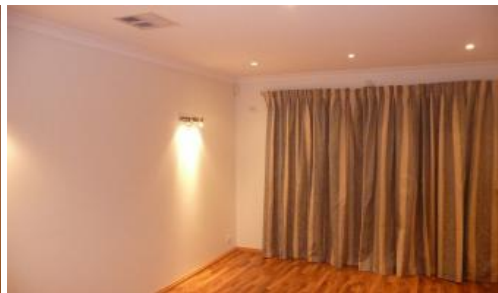




**147 Landbeach Bvd, Butler**



**Call for a viewing today!!**

This is a must see property Impressive Spacious Modern 4x2 Family Home

Fantastic Large over 300m2 building area with 4 bedroom 2 bathrooms plus study (can be converted into bedroom)

Family home located in The Green Estate

Excellent Location walking distance to Butler Train Station, Major Shopping Centre and Close to schools, walking distance to lollipops Playground and Cafe

Nicely located opposite to Yoga Centres, State Swim School and many more.

#### Property Features

4 Spacious Bedrooms with built in robes to every room

2 Bathrooms including heat lamps to both bathrooms

Master Bedroom including his and her Walk in Wardrobes with Ensuite including a beautiful Spa Bath and roller shutters for privacy

Fully Functional Large Chef Kitchen including seperate pantry, Large 900mm oven and cooktop, plenty of cupboard space and room for a dishwasher

Comfort with reverse cycle air conditioning and a gas bayonet to the family room

Modern lighting throughout the home

Exceptional Spacious Dining and living room Room area

Seperate Home Theatre Room with roller shutters

Internal Laundry with large walk in linen

Low maintenance gardens

4 2 2

<b>Price</b>	\$410 Per Week
<b>Property Type</b>	Rental
<b>Property ID</b>	3281

#### Agent Details

Robyn Horsman - 08 9206 1600

#### Office Details

Wanneroo  
945 Wanneroo Rd Wanneroo WA 6065  
Australia  
08 9206 1600



Two Seperate Large back patio areas perfect for entertaining

Massive 270Litre Hot Water System

Security for peace of mind with front window roller shutters, Security screen doors to all entrances and Fully Functional Alarm System.

Large Garage with additional storage space and roller door with rear access Plenty of space for parking

And the list goes on this property is a must see Call Today For a viewing 92061600 or email [natasha@urbanwa.com.au](mailto:natasha@urbanwa.com.au)

The above information provided has been furnished to us by the vendor/s. We have not verified whether or not that information is accurate and do not have any belief in one way or the other in its accuracy. We do not accept any responsibility to any person for its accuracy and do no more than pass it on. All interested parties should make and rely upon their own inquiries in order to determine whether or not this information is in fact accurate.