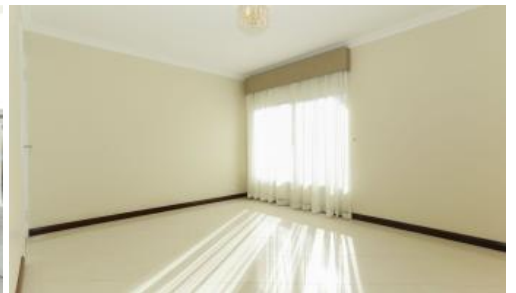


Sold



26B Tribute Street West, Shelley



****UNDER OFFER**** Absolute Quality - Absolutely...

****UNDER OFFER**** Magnificent 2 storey home on Large 808 sqm Block with quality fixtures and appliances. Italian porcelain tiles with feature tiling. Feature staircase and 'ballroom' size formal living and dining areas.

Study/fifth bedroom. Spacious bedrooms with built-in-robos. The open Plan kitchen has a 5 burner gas stove, Large Fridge Recess, Island Bench, Breakfast bar, Dishwasher and is fitted wit quality appliances and overlooks the dining and family areas. Second level has a second large living area which is carpeted and features a Balcony with Peaceful Views.

The Spacious master bedroom with Walk-in-Robe flows onto the ensuite which provides his and hers basins, shower and a spa bath!! The third and fourth bedrooms are double sized and have built in robes The upstairs bathroom is conveniently located near the two bedrooms and has a separate bath/shower.

WALK TO SHELLEY PRIMARY SCHOOL, SHOPS AND CANNING RIVER 808 SQUARE METRE BLOCK 310 SQUARE METRES OF LIVING AREA.

Other Features include: Imported Italian light fittings, Ducted Reverse cycle air conditioning, Security Camera Front Door Alarm Bell, Double Garage with undercover entry, Bore reticulated gardens, Gas hot water system and in the Rossmoyne Senior High School Zone.

The above information provided has been furnished to us by the vendor/s. We have not verified whether or not that information is accurate and do not have any belief in one way or the other in its accuracy. We do not accept any responsibility to any person for its accuracy and do no more than pass it on. All interested parties should make and rely upon their own inquiries in order to determine whether or not this information is in fact accurate.

🛏 5 🌐 3 🚗 2 📏 808 m2

Price	SOLD for \$1,255,000
Property Type	Residential
Property ID	1425
Land Area	808 m2
Floor Area	311 m2

Agent Details

Stan Horsman - 0418 949 875

Office Details

Wanneroo
945 Wanneroo Rd Wanneroo WA 6065
Australia
08 9206 1600

